
IceWarp Server

Installation Guide

Version 9.2



Contents

Installation Process **1**

Pre-requisites.....	1
Select Language.....	2
Confirm Installation.....	2
Welcome Screen.....	3
License Agreement.....	4
Upgrade Installation.....	5
Your Details.....	6
Database Selection.....	7
Entering your License.....	9
Component Selection.....	10
Installation Directory.....	11
Installation Progress and Completion.....	12

Index **15**

CHAPTER 1

Installation Process

In This Chapter

Pre-requisites.....	1
Select Language.....	2
Confirm Installation	2
Welcome Screen.....	3
License Agreement	4
Upgrade Installation	5
Your Details.....	6
Database Selection	7
Entering your License.....	9
Component Selection	10
Installation Directory	11
Installation Progress and Completion	12

Pre-requisites

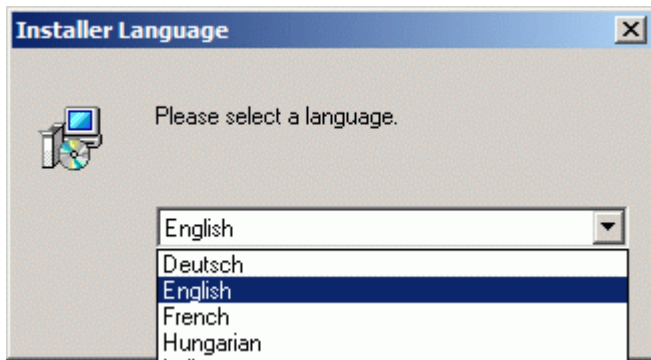
To install IceWarp Server you will need have the following to hand:

- Full setup package from **www.icewarp.com** <http://www.icewarp.com> or one of partner's sites, or on-line installer which downloads the modules you wish to install from internet- the advantage is that you save time by downloading only 500k setup and skipping modules which you have not licensed and don't wish to have installed.
- An idea of the number of accounts you will have on your server. IceWarp Server comes supplied with MS Access or SQLite as its database engine. If you expect to have more than 100 accounts on your system you should seriously consider moving to a more rugged database engine, such as MS SQL Server or MySQL. All IceWarp Server's databases (Accounts/AntiSpam/GroupWare etc.) will be stored on this server. If you choose to use an external database engine, it should be installed and ready and you should have user/password credentials.

The download package is in ZIP archive format and you will need to unzip it into an empty directory using a utility such as Winzip, WinRAR, or 7-zip, all available on the internet.

Once you have extracted all files from the archive please double-click the file called setup.exe to start the installation process:

Select Language

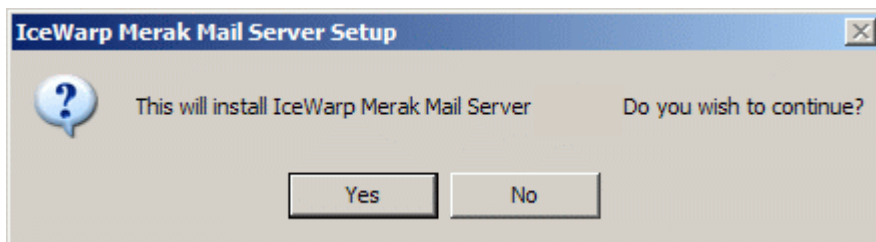


You will be asked which language you want to use for the installation.

IceWarp Server is available in numerous languages and more are always being added.

Choose the language you want from the drop-down box and press OK.

Confirm Installation



Click **Yes** to continue.

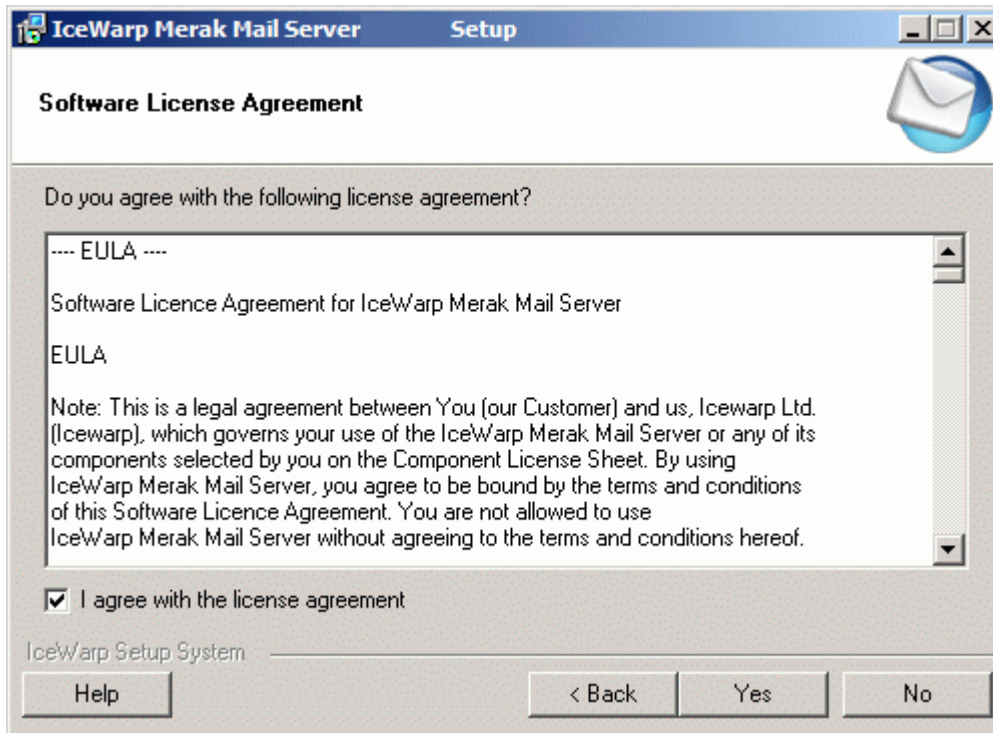
Welcome Screen



The welcome screen is displayed.

Click **Next** to continue.

License Agreement

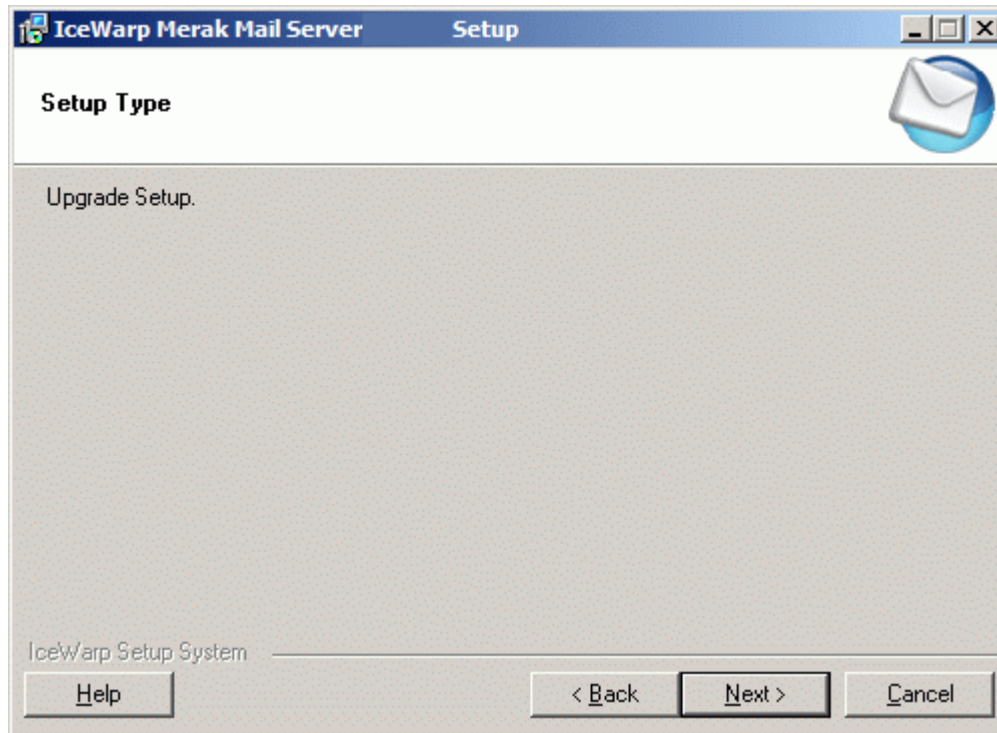


The License agreement is displayed.

Check the box to confirm your agreement with the license conditions.

Click **Yes** to continue.

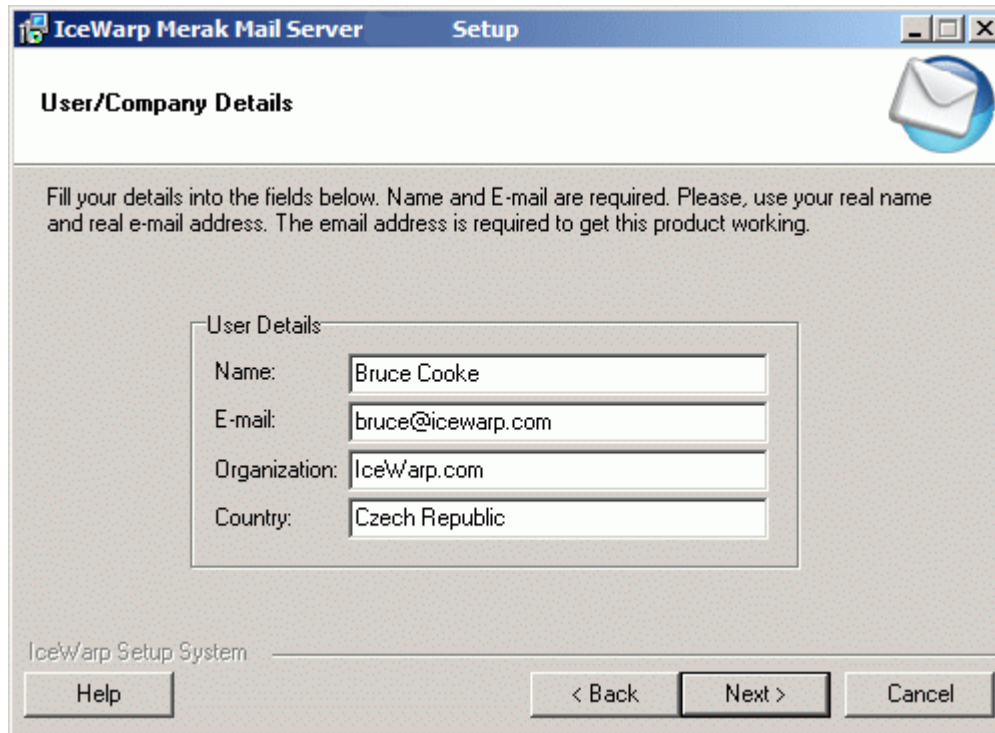
Upgrade Installation



If you are performing an installation over an older version of IceWarp Server you will be presented with this screen informing you that an Upgrade Setup will be performed.

Press Next to continue and proceed to **Component Selection** (on page 10)

Your Details

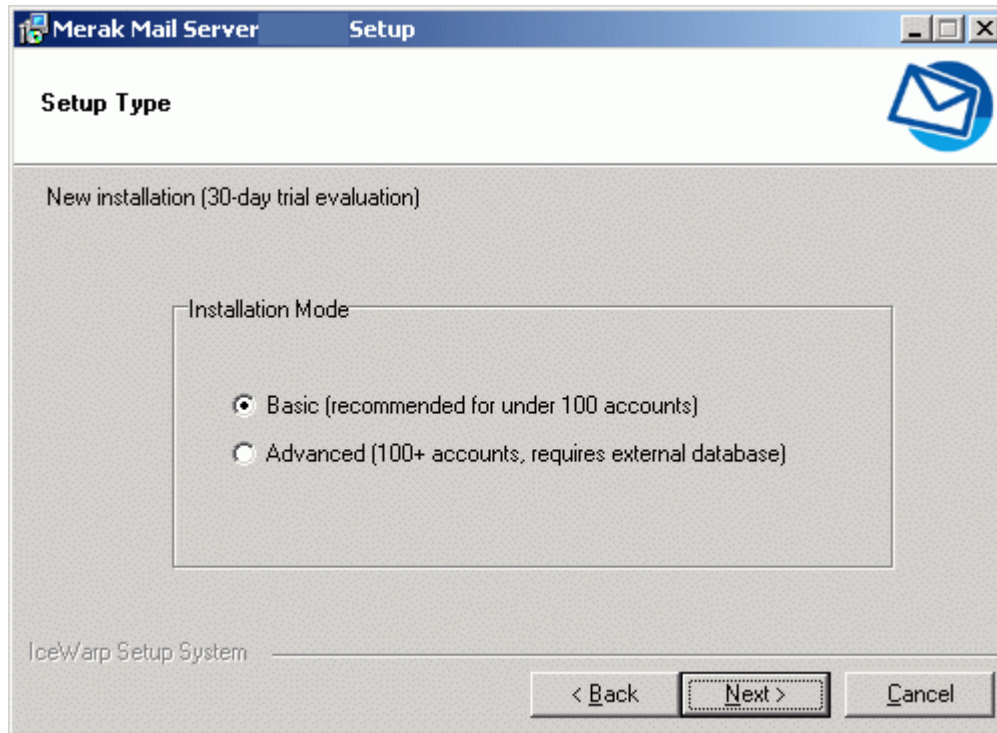


The screenshot shows a Windows-style dialog box titled "IceWarp Merak Mail Server Setup". The main heading is "User/Company Details" with an envelope icon. Below the heading is a text instruction: "Fill your details into the fields below. Name and E-mail are required. Please, use your real name and real e-mail address. The email address is required to get this product working." A "User Details" box contains four input fields: "Name" (Bruce Cooke), "E-mail" (bruce@icewarp.com), "Organization" (IceWarp.com), and "Country" (Czech Republic). At the bottom, there are three buttons: "Help", "< Back", and "Next >", and a "Cancel" button.

Enter your user details here.

Click **Next** to continue.

Database Selection



In this screen you will select what type of database IceWarp Server will use.

Basic installation will create and use an MS Access database with no further input from yourself.

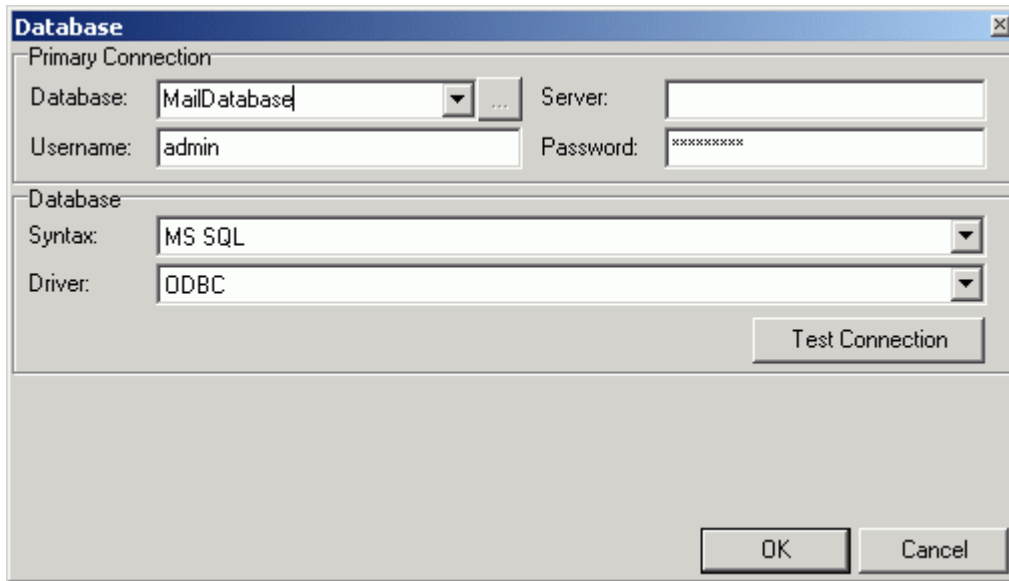
If you do not require an external database simply select the Basic option and click **Next** and continue with **Component Selection** (on page 10).

Advanced installation will ask you for the information required to access your external database system.

Select the Advanced option and Click Next.

The **Database** dialog will open where you should enter the credentials to access your database.

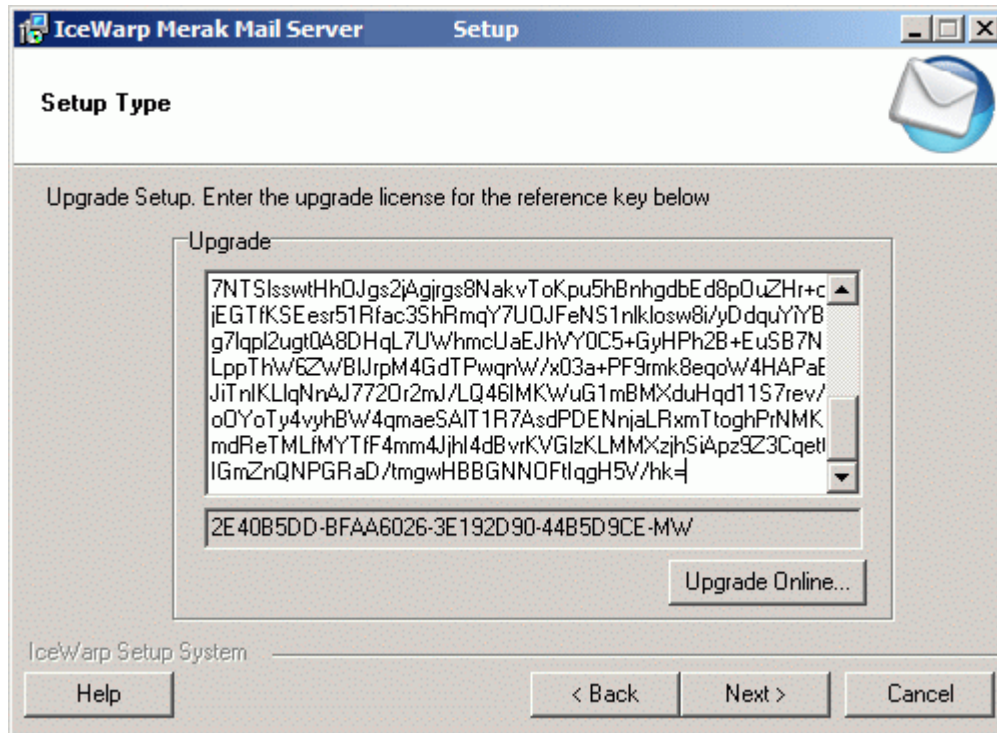
The following screenshot shows an example for a MS SQL installation.



You can press the **Test Connection** button to have the process check the credentials are valid, but this test will be performed when you click **OK**. If there are any problems the dialog will stay open and the installation will not continue.

Press **OK** to continue with the installation.

Entering your License



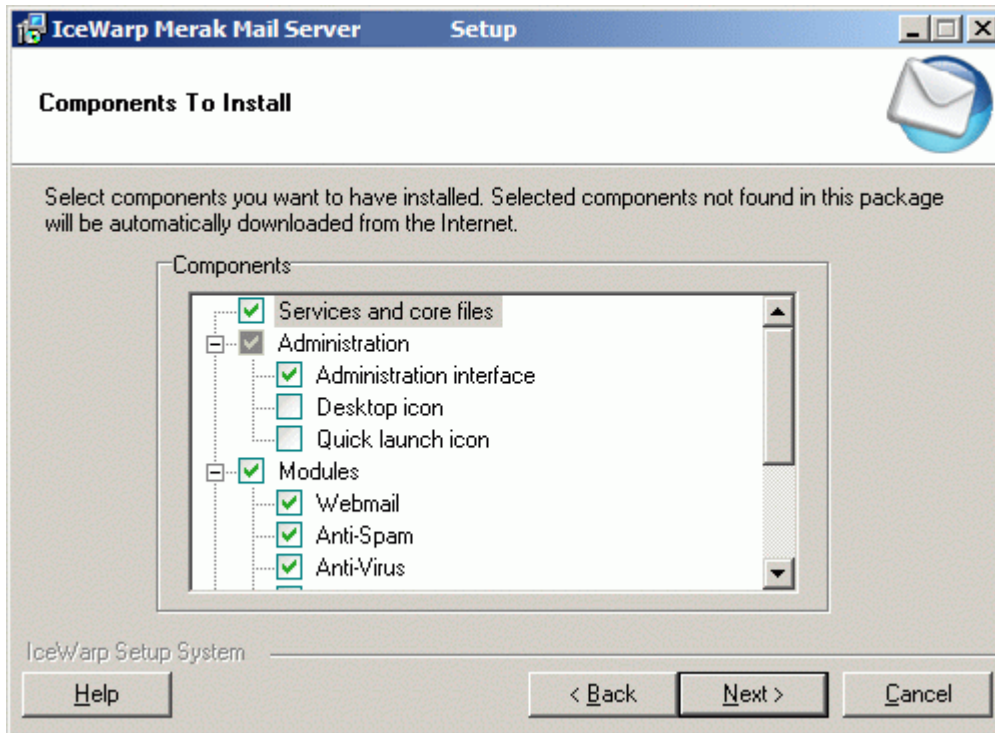
You may get the opportunity to input your License at this point.

You can press the Upgrade Online button to access the IceWarp website to retrieve your license.

You can also copy your license (if you received it in an email) and paste it into the textbox (as shown).

Click Next to continue.

Component Selection

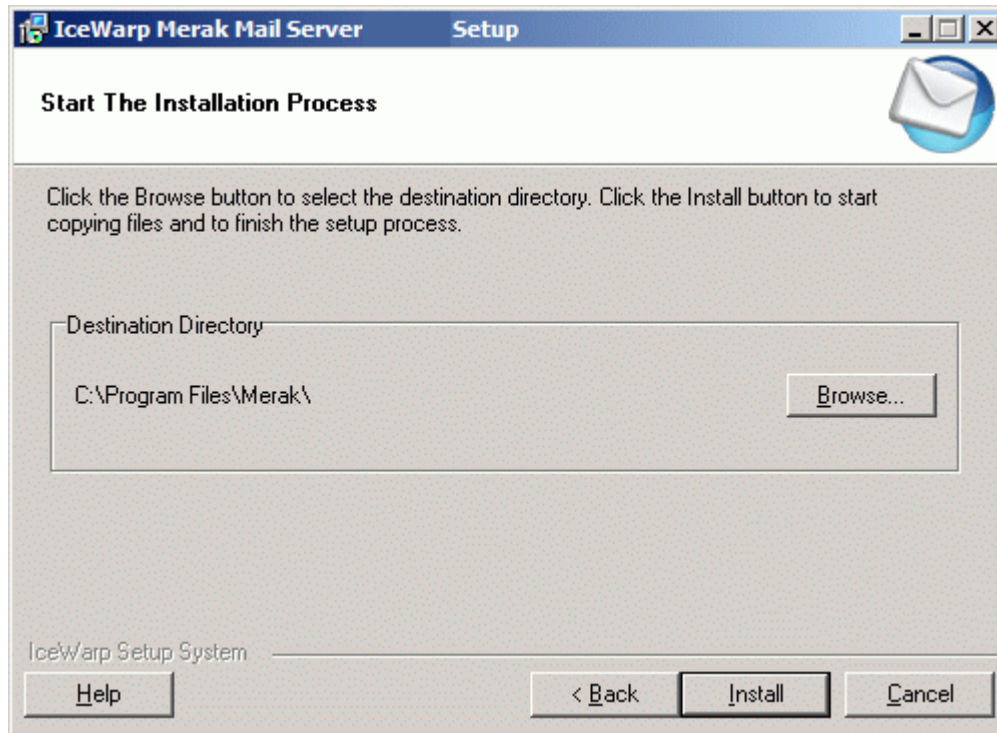


You can now select which components you wish to install.

By default all components are selected (shown by the green tick).

Make your choices and click **Next** to continue.

Installation Directory



You can select the installation directory for IceWarp Server

Note that IceWarp Server will create subdirectories under this directory to store information.

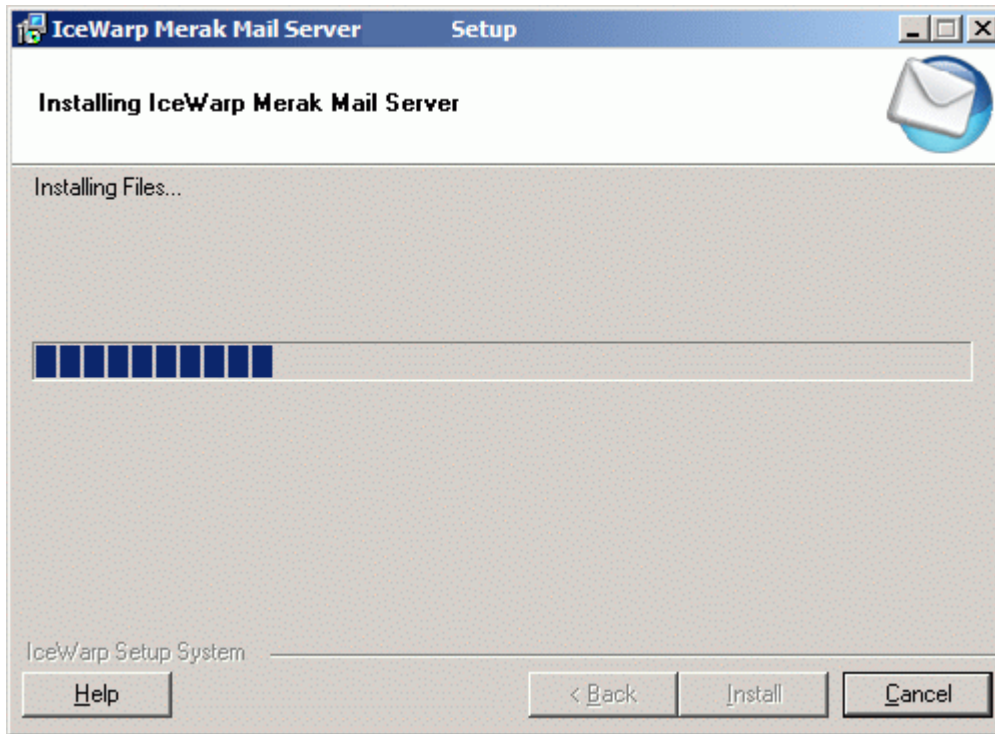
You should ensure that the disk that you select has enough space to hold all the emails you expect to hold.

Press the Browse button to open a standard directory browse dialog.

Press the Install button when you are happy with your selection.

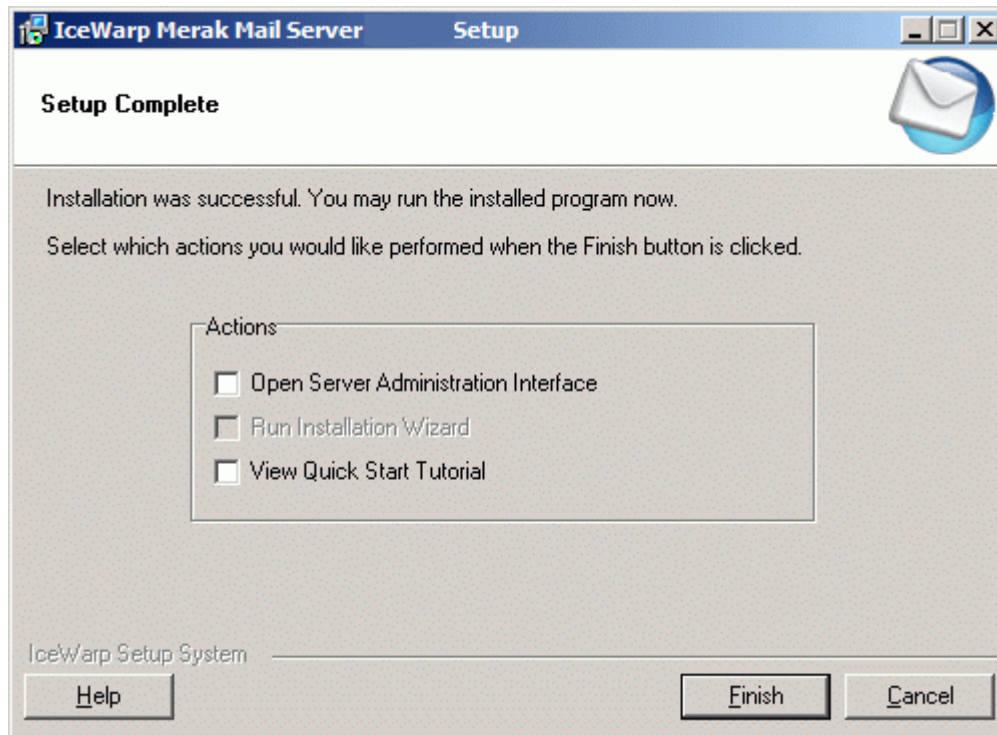
Installation Progress and Completion

An installation progress dialog will be displayed as follows:



Installation may take a few minutes depending on the speed of your computer.

When the installation is complete the following screen is shown.



At this point you can choose to have any combination of the three actions performed:

Open Server Administration Interface - this opens the IceWarp Server Administration Console, where you can control all of IceWarp Server's behavior.

Run Installation Wizard - this starts a wizard which will guide you through setting up your first email domain.

View Quick Start Tutorial - this opens in your default HTML browser.

Select the actions you require and click **Finish**.

Congratulations, IceWarp Server is now installed, and running.

Index

C

Component Selection • 5, 7, 10

Confirm Installation • 2

D

Database Selection • 7

E

Entering your License • 9

I

Installation Directory • 11

Installation Process • 1

Installation Progress and Completion • 12

L

License Agreement • 4

P

Pre-requisites • 1

S

Select Language • 2

U

Upgrade Installation • 5

W

Welcome Screen • 3

Y

Your Details • 6